

Process solutions  
you can count on.



## FX-940 ACI

Full automated conformal coating inspection

The Nordson ASYMTEK FX-940 ACI makes inspection of conformal coatings simple and convenient by automating the inspection process for quality and consistency of coatings under UV lighting with the use of proprietary inspection algorithms.

With minimal programming, the inspection set-up is fast and intuitive typically requiring less than 30 minutes. A known good board is used to learn the coverage and non-coverage areas. The automated inspection typically takes only a few seconds with inspection results immediately displayed. These results can be stored and reviewed off-line at any time. The FX-940 ACI also reads all common barcodes for product traceability.

### Features:

- Quick set-up with Auto Train
- 9 megapixel color imaging
- Proprietary lighting
- Optional side angle cameras

### Automated Inspection for:

- Conformal coating coverage
- Micro Coatings
- Flux coverage
- Selected areas of non-coverage
- Delamination / cracks and bubbles
- SPC, barcode reading and archiving of inspection results
- Includes SMT and THT component inspection

# FX-940 ACI Full automated conformal coating inspection

## Specifications

### Inspection Capabilities

Throughput:	Up to 194 sq. cm/s (30 sq. in./ sec.)
Maximum Board Size:	470 x 482mm (18.5" x 19")
Clearance:	100mm (4") top and bottom
Optional Upgrade:	4 side angle cameras
Defects Detected:	Coatings and dispensed material coverage, non-coverage, cracks and delamination

### Software

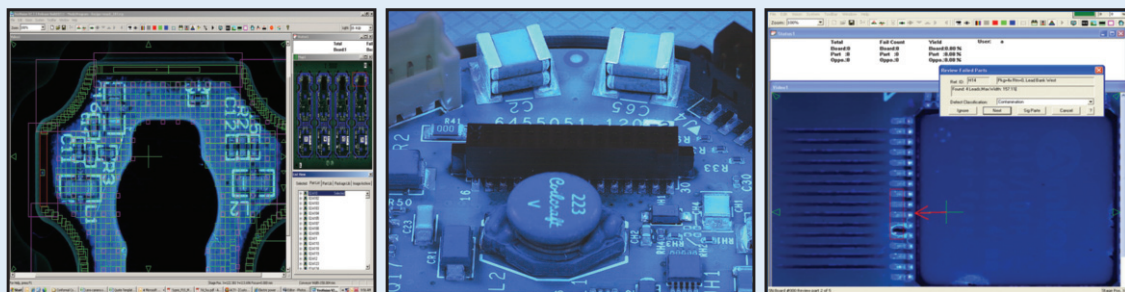
Algorithms:	Color, OCV, OCR, barcode recognition, both image and rule-based algorithms
Data Requirements:	None
CAD Translation Package:	Not required
Programming Skill Level:	Technician or operator
Operating System:	Windows 7
Off-line Software:	Optional - Rework, Review and Program Creation
SPC Software:	Real-time local and remote monitoring of first pass yield, defect trends, and machine utilization.

### Hardware

Lighting:	Proprietary UV, Coax and White LED lighting
Imager:	9 megapixel color camera: 25 micron pixel size Resolution 4068 x 2160

### Facilities

Power:	110-240 VAC, 50/60 Hz, 16 amps
Footprint:	1000mm x 1329mm x 1531mm (39" x 52" x 60")
Weight:	430 kg (950 lbs.)



Automated inspection for conformal coating.

Optional side angle viewing cameras.

Defect image of conformal coat.

### Nordson ASYMTEK

USA Headquarters:  
2747 Loker Ave. West  
Carlsbad, CA USA 92010  
+1.760.431.1919 **Phone**  
+1.760.431.2678 **Fax**

China:  
#137 Guoshoujing Road  
Zhangjiang Hi-Tech Park  
Pudong,  
Shanghai 201203, P.R.China  
+86.21.3866.9166 **Phone**  
+86.21.3866.9199 **Fax**

SE Asia:  
2 Corporation Road  
#03-11/12  
Corporation Place 618494  
Singapore  
+65 6749 0538 **Phone**  
+65 6552 7116 **Fax**

Europe, Middle East, Africa:  
Bergerstraat 8  
6226 BD Maastricht  
The Netherlands  
+31.352.4466 **Phone**  
+31352.7722 **Fax**

Japan:  
Tohshin Bldg. 2F  
1-5-21 Katsushima Shinagawa  
Tokyo, 140-0012  
+81 3 5762 2801 **Phone**  
+81 3 5762 2802 **Fax**



**Nordson ASYMTEK**  
USA Headquarters  
2747 Loker Ave. West  
Carlsbad, CA USA 92010

+1.760.918.8471 **Phone**  
+1.760.918.8472 **Fax**  
info@nordsonasymtek.com  
www.nordsonasymtek.com

